



NetUnity SharePoint WSRP Consumer

WSRP Application Integration for Microsoft SharePoint

Expand the integration capabilities of Microsoft Office SharePoint Server (MOSS) by using the NetUnity SharePoint WSRP Consumer to integrate WSRP portlets. The NetUnity SharePoint WSRP Consumer delivers a scalable, robust and true implementation of WSRP within SharePoint including support for WSRP 1.0 and WSRP 2.0 portlets.

Executive Summary

Organizations today use a variety of heterogeneous computing platforms, development tools and programming languages to support their business needs. For many, portals are the primary means of aggregating, searching, securing and providing single point access to disparate applications and content throughout the organization.

Current trends indicate that the portal market is quickly consolidating into primarily two camps: Java platform portals and Microsoft Office SharePoint Server. Java portal vendors like IBM, OpenText and Oracle commanded early leads in the enterprise portal market. However, recent surveys show that many enterprises are rapidly deploying SharePoint at all levels of the organization. According to Global Intranet Trends 2009 report of 227 participant organizations, 55% have implemented or are considering implementing SharePoint.

Given the continued popularity of the Java platform and the appeal of Java community standards to large enterprises, it is unlikely that Microsoft will dominate the portal platform market. The more likely scenario will be a portal market divided between Java-based portal vendors and Microsoft well into the foreseeable future.

Organizations deploying SharePoint will sooner or later have to contend with the need to integrate Java-based portlets into SharePoint. Java-based portlets can come from many sources including those developed internally by different parts of an organization or pre-packaged from third party Java-based software vendors like SAP, IBM and Oracle.

One open standard promises to make platform neutral integration a reality. Web Services for Remote Portlets (WSRP) is a standard that defines a common interface and protocol for creating pluggable, user-facing, interactive remote portlets using XML web services that is platform and development tools independent. The WSRP standard is developed by the Organization for the Advancement of Structured Information Standards (OASIS) - an

international consortium that advances the development and adoption of XML and web service standards. Its members and sponsors include Microsoft, IBM, Oracle, SAP, Nokia, Boeing and other international private, public and governmental organizations inside and outside the software industry that develop and promote open standards.

The NetUnity SharePoint WSRP Consumer allows organizations to integrate WSRP compliant applications into Microsoft Office SharePoint Server including support for WSRP 1.0 and WSRP 2.0 portlets.

Why WSRP?

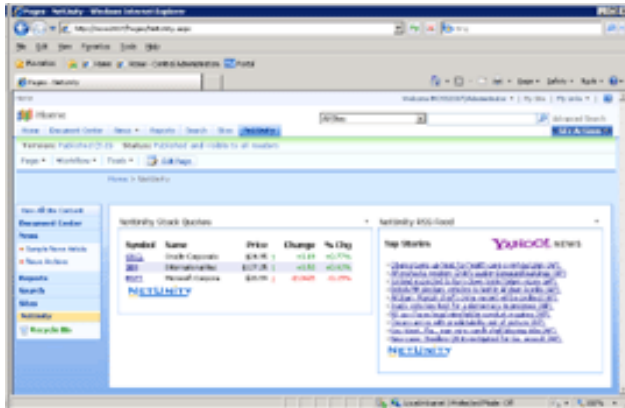
The WSRP version 1.0 specification was approved as an OASIS standard in August 2003. The standard was created to enable businesses to provide content and application portlets to consumers in a form that does not require the use of proprietary interfaces or require consumer specific adaptation. Over the years, the standard continued to evolve culminating in the release of WSRP version 2.0 in April 2008. The WSRP 2.0 standard focused extensively on support for portlet-to-portlet communication and coordination: the ability to pass data and coordinate activities between WSRP portlets.

A major benefit of the WSRP specification is that it allows application and content providers to publish portlets to any consumer regardless of location or platform. Another benefit is that it allows developers to write portlets using popular development environments such as Java/J2EE or Microsoft's .NET Framework without having any knowledge of the consumer application and its environment.

The NetUnity SharePoint WSRP Consumer

At NetUnity, we believe that organizations that deploy and rely on SharePoint should be able to integrate and use WSRP-based applications.

Use the NetUnity SharePoint WSRP Consumer to integrate WSRP portlets into Microsoft Office SharePoint Server including support for WSRP 1.0 and WSRP 2.0 portlets. SharePoint administrators can easily add and configure WSRP portlets and SharePoint end users can simply make use of them as Web Parts. The SharePoint WSRP Consumer is a highly functional, robust and scalable WSRP consumer implementation that allows SharePoint to integrate standards-based remote portlets.



SharePoint WSRP Consumer – Example Portlets

Business Value

Increase return on investment by expanding SharePoint integration capabilities to include Java-based WSRP portlets. Now, organizations can leverage all of their software and development resources to create and integrate standards-based WSRP portlets into SharePoint. Thanks to simple setup and ease of use, organizations deploying SharePoint can significantly reduce licensing, training, maintenance and development costs compared to using more costly portals.

WSRP Version 1.0 and Version 2.0

The SharePoint WSRP Consumer supports the WSRP version 1 and version 2 specifications including all forms of portlet-to-portlet communication and coordination. Supporting both specifications allows you to preserve your investment in version 1 portlets as well as take full advantage and obtain the most benefit from the new features in the version 2 specification.

True WSRP Architecture

The SharePoint WSRP Consumer is built using NetUnity's own WSRP .NET Consumer™ product and is written in fully managed C# code for high performance and high availability. The architecture provides the highest level of asynchronous and parallel processing while adhering to the blocking nature of certain WSRP operations. The

SharePoint WSRP Consumer delivers a scalable and robust implementation of WSRP within SharePoint.

Rapid Deployment

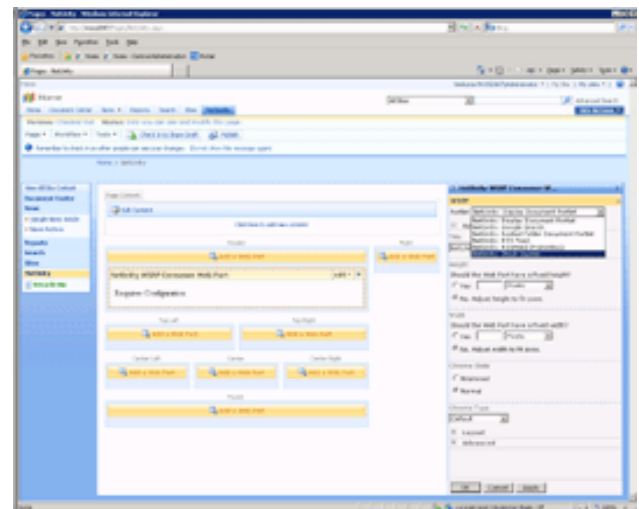
The SharePoint WSRP Consumer was designed to be compact for rapid deployment by reducing its file system footprint and eliminating dependencies on specialized non-standard libraries, services and third party components. Deploying the SharePoint WSRP Consumer simply involves installing and activating a SharePoint Feature and having access to a SQL Server database.

ASP.NET Membership and Role Provider Model

The SharePoint WSRP Consumer supports the same standard ASP.NET authentication, membership provider and role provider model as SharePoint. This means it is capable of using integrated security, LDAP and SSO solutions that SharePoint supports.

Extensive WSRP Support

The SharePoint WSRP Consumer is a complete WSRP consumer server implementation within SharePoint. It is responsible for managing and presenting WSRP portlets and provides standard services for navigation, interaction, portlet-to-portlet communication, resources, portlet subscription, personalization, layout, session management, caching, user profiles and all the other services required for a complete WSRP consumer implementation. Complete management and configuration capabilities of WSRP producers and portlets are provided using a simple point-and-click web interface.



SharePoint WSRP Consumer – Adding a Portlet

Key Features and Benefits

NetUnity SharePoint WSRP Consumer

Solutions

- Integrate a rich collection of Java-based WSRP portlets into SharePoint
- Rapidly build composite applications in SharePoint using WSRP portlets
- Build a federated portal and portlet environment
- Adopt flexible load balanced architecture

Features

- Supports version 1 and version 2 of WSRP including portlet-to-portlet communication
- Subscribe to WSRP content using standard WSDL references
- Simple as adding a Web Part to a SharePoint page
- Complete administrative user interface for managing WSRP portlets
- Uses standard SharePoint authentication, membership provider and role provider model
- Compact with minimal dependencies and easily deployed within SharePoint

Benefits

- Expand SharePoint integration capabilities to include Java-based WSRP portlets
- Promote the use of SharePoint at higher levels throughout the organization
- Reduce licensing, training, maintenance and development costs compared to using expensive enterprise portals
- Utilize development resources with different skill-sets for portlet development
- Integrate third party applications and content into SharePoint

System Requirements

- Windows XP, Windows 2000, Windows 2003, Windows 2008
- SQL Server 2000/2005/2008
- IIS 5.x and higher
- .NET Framework 2.0
- Microsoft SharePoint 2007/2010

About NetUnity Software

NetUnity Software is an innovator in Web Services for Remote Portlets (WSRP) software. NetUnity provides products and services that enable businesses to develop and deploy portal solutions based on the open standard - Web Services for Remote Portlet (WSRP) - using the Microsoft .NET platform. NetUnity is committed to helping customers and partners deliver high-quality, easily maintainable, WSRP applications and integration solutions. NetUnity is member of OASIS WSRP Committee and an active participant in the development of the WSRP Specification.

© Copyright 2012. NetUnity Software LLC. All rights reserved. All other company and product names may be the subject of intellectual property rights reserved by third parties.

NetUnity Software, LLC

Phone: 866-843-0987

Fax: 757-744-0149

Info@netunitysoftware.com

<http://www.netunitysoftware.com>

